

## IF YOU BECOME TRAPPED:

### In your home

- Stay inside until the fire passes.
- Close all windows.
- Keep all doors closed, but unlocked.
- Keep family together and remain calm.
- Remember, if it gets hot inside your house, it will be much hotter outside.

### In your car

- Park away from vegetation.
- Roll up windows.
- Cover mouth with dry cloth to protect airway.
- Cover yourself with a blanket or jacket.
- Stay in the car until the fire passes.
- If the vehicle catches on fire, exit *only* after the wildfire has passed.

### On foot

- Find an area away from vegetation.
- Lie face down.
- Cover mouth with dry cloth to protect airway.

### After the Fire Passes

- Check the roof and exterior of your home, extinguish all sparks and embers.
- Check your attic for hidden embers.
- Check your yard for burning wood piles, trees, fence posts or other materials.
- Use water only when necessary to extinguish fire, La Honda has a very limited water supply.

### Returning to Your Home

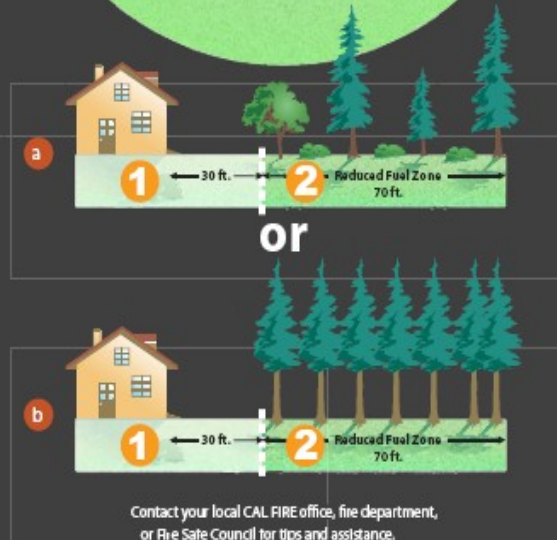
- Emergency Managers will decide when it is safe to return.
- Information will be available through the media, at road blocks, and the evacuation center.

**SIGN UP FOR FREE EMERGENCY ALERTS AT:**  
<http://www.smcalert.info>

For more info see [www.lahondafire.org](http://www.lahondafire.org)

8.2008

# 100' DEFENSIBLE SPACE Make Your Home FIRE SAFE



Contact your local CAL FIRE office, fire department,  
or Fire Safe Council for tips and assistance.  
[www.fire.ca.gov](http://www.fire.ca.gov)

**Prepare your defensible space NOW  
before the fire happens!**



La Honda Fire  
Brigade  
**CAL FIRE**  
San Mateo  
County Fire Dept.



## Central LA HONDA Emergency Evacuation Plan





# Central La Honda Evacuation Plan



## EVACUATION PROCEDURES

### *In the event of an emergency...*

- Citizens may be notified by emergency personnel if evacuation is necessary, **or** by a phone call from the San Mateo County Office of Emergency Services & Homeland Security (Reverse 911 System).
- Remember your pets in your evacuation plan. Bring your necessary medications with you when evacuating
- Safely make your way out of the area using the pre-designated exit routes, or as directed by emergency services personnel.
- If evacuations are ordered, an evacuation center will be set up.

Proceed to:

#### **Pescadero High School**

350 Butano Cutoff Rd  
Pescadero

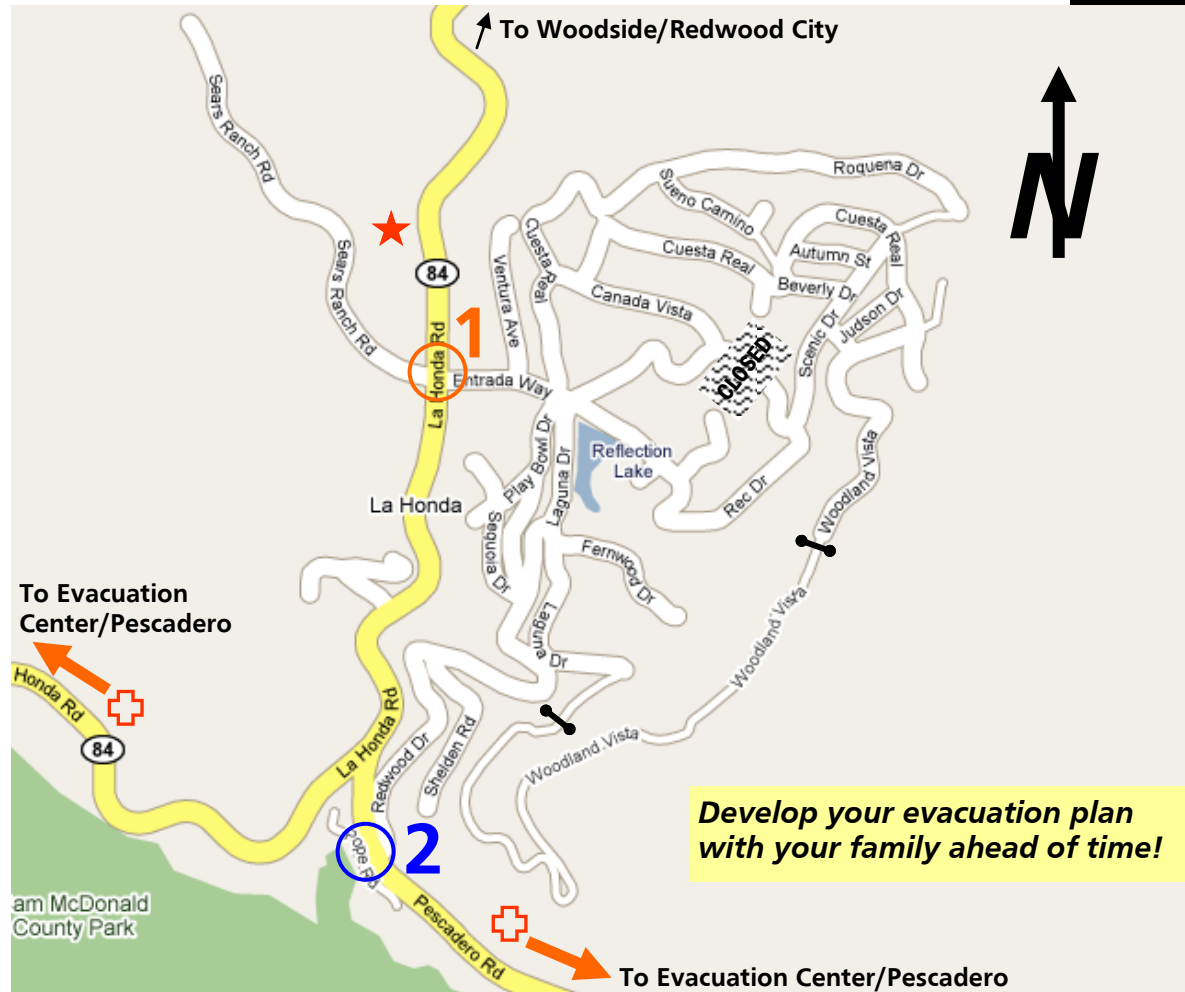
- If evacuated, contact the Red Cross, or an emergency worker at the evacuation center to provide information about your status so that family or friends can be informed.  
American Red Cross # 415-427-8000
- After an area has been evacuated, the area will remain closed until the threat has passed.
- MOST IMPORTANTLY, if you feel unsafe, don't wait. Follow the evacuation procedures and get out.
- A representative from the command post will keep you informed at the evacuation center.

Provided by:

**La Honda Fire Brigade**

**CAL FIRE—San Mateo County Fire Department**

**San Mateo County Office of Emergency Services & Homeland Security**



### EXIT ROUTES

#### **1. Entrada Way to La Honda Rd (Hwy 84)**

#### **2. Redwood Drive to Pescadero Rd**

- For Hildebrand Rd, Memory Ln, Pope Rd, Coggins Rd, Redwood Terr, La Honda Trailer Park and Sears Ranch Rd: Please remember all of these areas have only one way in/out. If evacuations are contemplated, your family should be prepared to move quickly. Do not block the road—Fire Apparatus will be coming into the area.



**Evacuation Center**



**Incident Command Post  
(Emergency Personnel ONLY)**

### **DRIVE WITH CAUTION!!!!**

- **Make sure your headlights are on!**
- **If conditions are too smoky, proceed slowly and stop if you can't see!**
- **Keep an eye and ear out for emergency vehicles! Yield the right-of-way!**
- **Roll up your windows, ensure your radio is off, and turn on your air conditioner!**

**Keep Calm, Think Clearly,  
and ACT Decisively**